

## DESCRIPTION

MT7810 is a high precision LED constant current control chip operating at critical conduction mode (CRM) with zero current switched-on and peak current switched-off. It's mainly targeted for non-isolated buck LED power systems.

Critical conduction mode ensures that the MT7810 turns on the power MOSFET when the inductor current reaches zero, reducing the power MOSFET switching loss, the system achieves more than 95% efficiency. With critical conduction mode, and the line compensation, MT7810 outputs high accuracy LED current, and further achieves good line regulation and load regulation.

MT7810 has wide working voltage range, which is suitable for full-range AC input or 10V-400V DC input voltage. MT7810 provides various kinds of protections, such as over current protection(OCP), short circuit protection (SCP), over voltage protection (OVP) and over temperature protection(OTP), etc, to ensure system reliability.

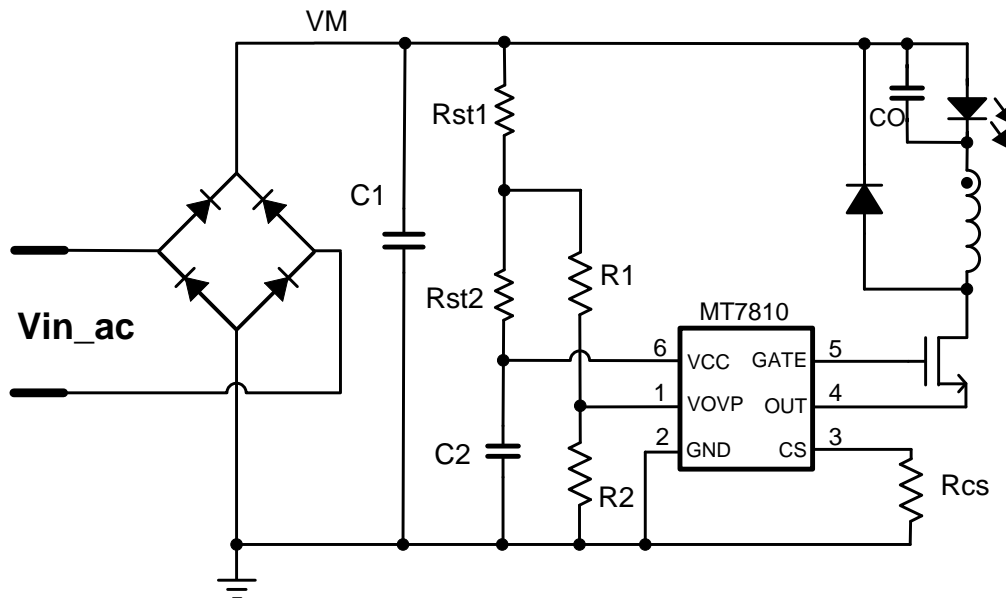
## FEATURES

- Critical Conduction Mode, not sensitive to the inductance.
- Up to 95% of efficiency
- Highly accurate constant LED current
- Cycle-by-cycle current limitation
- LED Short Circuit Protection
- LED Over Voltage Protection
- Leading edge blanking technique
- Under-voltage lockout (UVLO) protection
- Over temperature protection
- SOT23-6 package

## APPLICATIONS

- LED bulb, LED tube, LED signal, LED stage light and landscape lamp
- General purpose constant current source

### Typical Application Circuit



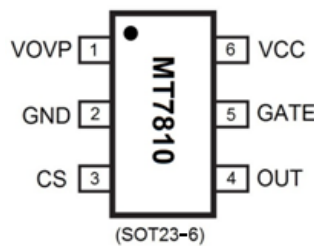
**ABSOLUTE MAXIMUM RATINGS**

VCC maximum sink current	5mA
VOVP (over voltage protection pin)	-0.3 ~ 6V
OUT (Internal switch)	-0.3 ~ 40V
GATE (External power MOS drive pin)	-0.3 ~ 40V
CS (current detection pin)	-0.3V ~ 6V
P <sub>DMAX</sub> (maximum power consumption)	0.8W
Storage Temperature	-55°C ~ 150°C
Junction Temperature (T <sub>j</sub> )	150°C

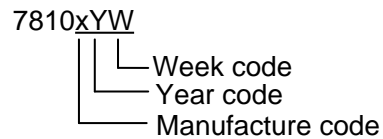
**RECOMMENDEDE OPERATING CONDITIONS**

Operating Temperature	-40°C ~ 105°C
-----------------------	---------------

**PIN CONFIGURATIONS**



**Chip Mark**



**PIN DESCRIPTION**

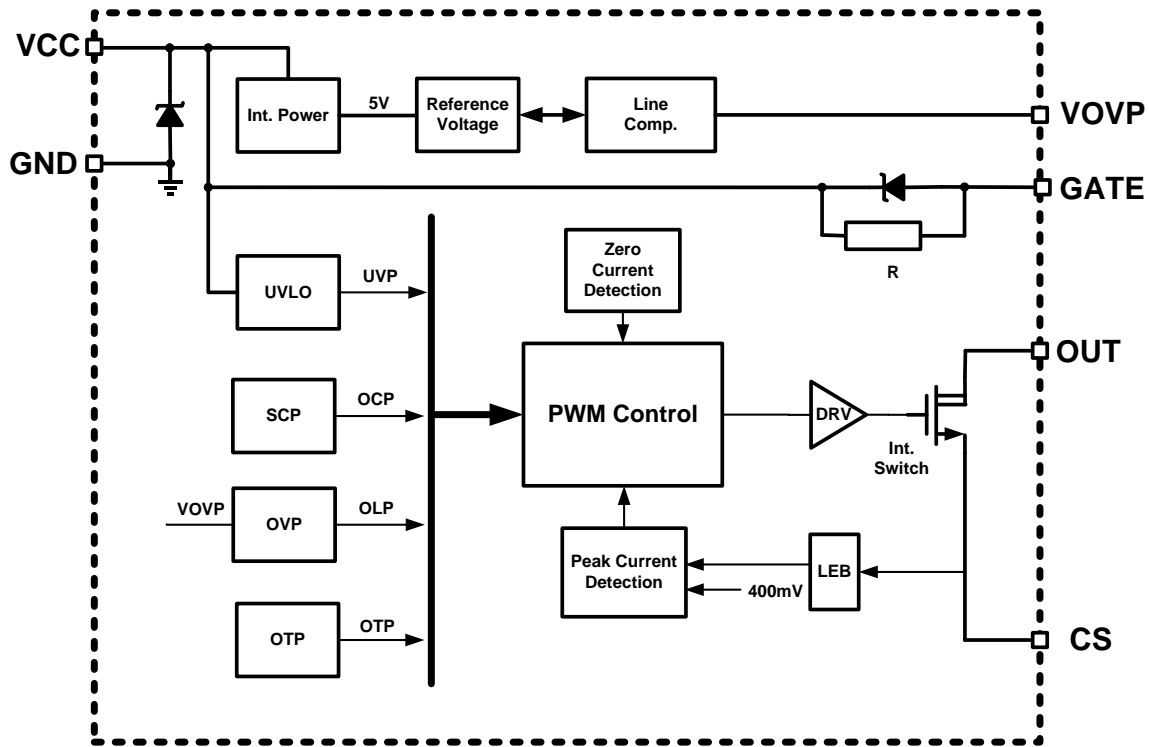
Name	Pin No.	Description
VOVP	1	Over voltage protection and line voltage compensation configuration
GND	2	Ground
CS	3	Current sense input, connect a sense resistor to ground
OUT	4	Internal switch, connect to the external power MOS source terminal.
GATE	5	External power MOS gate drive pin.
VCC	6	Chip power supply, internal clamped at 15.5V

## ELECTRICAL CHARACTERISTICS

(Test condition: VCC=13V, TA=25°C unless otherwise stated.)

Symbol	Parameter		Min	Typ	Max	Unit
<b>Start-up and supply voltage (VCC Pin)</b>						
I <sub>START</sub>	Start up current	V <sub>CC</sub> < V <sub>CC_UV</sub>		60	150	μA
V <sub>CC_UV</sub>	Lower threshold Voltage of V <sub>CC</sub> (UVLO)	V <sub>CC</sub> Pin ramp down		5.5		V
V <sub>START</sub>	Start-up voltage	V <sub>CC</sub> Pin ramp up		12		V
V <sub>CC-CLAMP</sub>	V <sub>CC</sub> Clamping voltage	I <sub>DD</sub> < 5mA		15.5		V
<b>Supply current</b>						
I <sub>op</sub>	Operating current			0.3		mA
<b>Current sense (CS Pin)</b>						
V <sub>CS-TH</sub>	Peak current detection threshold		390	400	410	mV
LEB1	Leading edge blanking at CS pin			500		nS
<b>Thermal Protection</b>						
OTP	Over temperature protection			155		°C
	Over temperature release hysteresis			30		°C
<b>Driver Circuit</b>						
T <sub>OFF_MIN</sub>	Minimum OFF time			1.5		uS
T <sub>OFF_MAX</sub>	Maximum OFF time			400		uS
T <sub>ON_MAX</sub>	Maximum ON time			55		uS

## BLOCK DIAGRAM



## APPLICATION INFORMATION

MT7810 is a non-isolated, buck constant current Driver IC. Critical conduction mode ensures that the MT7810 turns on the power MOSFET when the inductor current reaches zero, reduces the power MOSFET switching loss, Improves efficiency. MT7810 outputs high accuracy LED current with simplified peripheral circuits. Low BOM cost is achieved.

### Start up

When power on, VCC is charged through the start-up resistor. As VCC reaches 12V, the control logic starts to work, and internal switch starts toggling. When VCC raise up to 15.5V, it will be clamped. MT7810 shuts down as VCC falls below 5.5V.

### CRM and Output Current Setup

Internal switch current is cycle-by-cycle detected by monitoring the CS pin voltage. When the

voltage on CS pin reaches 400mV (internal reference voltage), the power MOSFET is turned off. When the inductor current drops to zero, the system turns on the power MOSFET again. The peak inductor current is given by:

$$I_{LPK} = \frac{400}{R_{CS}} (mA) \quad (1)$$

where  $R_{CS}$  is the current sense resistor in ohm. The CS comparator also includes a 500nS leading edge blanking time to block the transient noise as the power switch just turned on. The current in LED can be calculated as:

$$I_{LED} = \frac{I_{LPK}}{2} = \frac{400mV}{2 \times R_{CS}} (mA) \quad (2)$$

where  $I_{LPK}$  is the peak inductor current. Shown in the above equation, the output current is determined by the  $R_{CS}$  and the 400mV reference voltage, insensitive to the inductance of the inductor.

### Switching Frequency

MT7810 operates at critical conduction mode. When the inductor current is zero, the system turns on the internal switch, in result, the external power MOSFET is also switched on, inductor current rises from the ground up. The power MOSFET conduction time is:

$$T_{ON} = \frac{L \times I_{LPK}}{V_{IN} - V_{LED}} \quad (3)$$

where L is the inductance of the inductor;  $I_{LPK}$  is peak current through the inductor;  $V_{IN}$  is the DC voltage of the rectified input voltage;  $V_{LED}$  is the forward voltage drop on the LED.

When the CS voltage increases to the 400mV, the internal switch is turned off, in result, the power MOSFET is also switched off. The inductor current will discharge the LED through the free-wheeling diode. The internal switch won't turned on until the current in the inductor drops to zero. The external power MOSFET turn-off time is:

$$T_{OFF} = \frac{L \times I_{LPK}}{V_{LED}} \quad (4)$$

Operating frequency of the system is:

$$f = \frac{1}{T_{ON} + T_{OFF}} = \frac{V_{LED} \times (1 - \frac{V_{LED}}{V_{IN}})}{L \times I_{LPK}} \quad (5)$$

From the above equation, it's showing that MT7810 operating frequency is determined by the input voltage  $V_{IN}$ , the LED forward voltage drop  $V_{LED}$  and the inductance L. The higher the input voltage  $V_{IN}$ , the higher the operating frequency. For both EMI and efficiency consideration, the operating frequency located between 30kHz - 80kHz is recommended. To meet this requirement, appropriate inductance value should be determined at minimum input voltage condition.

MT7810 sets the maximum off-time  $T_{OFF\_MAX}=400\mu S$ , the minimum off-time

$T_{OFF\_MIN}=1.5\mu S$ . Shown in  $T_{OFF}$  equation, if the inductance is large,  $T_{OFF}$  maybe longer than  $T_{OFF\_MAX}$ , the system will turn on the switch before the inductor current falls to zero, after five times consecutive  $T_{OFF\_MAX}$  cycles, the system enters hiccup and re-start status. On the contrary, if inductance is small,  $T_{OFF}$  may be shorter than  $T_{OFF\_MIN}$ , then the inductor current has already been reduced to zero before the next cycle starts, the system enters into discontinuous mode. The actual LED current will be smaller than the target value.

Maxic Technology Corporation provides software design tool of this chip, it helps customer to come out proper solution and to choose the right inductance value.

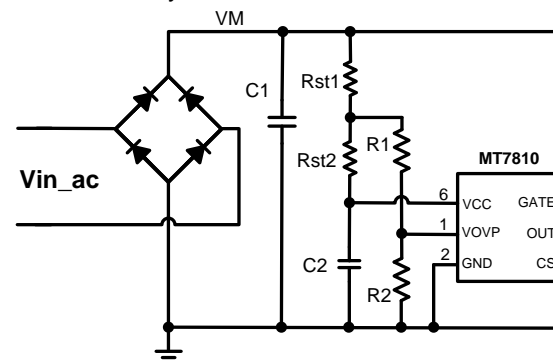
### LED Over voltage protection setup

MT7810 sets the Over voltage protection threshold by VOVP pin (Pin1). The external R1 and R2 form a resistive voltage divider.

Over voltage protection threshold is:

$$V_{OVP} = 0.9 \times \frac{R1}{R2} \quad (6)$$

R2 resistance is between 2.2kohm ~ 10kohm (Refer to the following schematic. Equation (6) is based on the following assumptions:  $R_{st1}=R_{st2}$ ,  $R1 > R_{st1}$ .  $R_{st1}$  and  $R_{st2}$  is about 200k ohms. R1 resistance is in 500k ohm range). At the LED open circuit condition, once the output voltage exceeds the OVP threshold, MT7810 stops switching. Until the VCC voltage drops to UVLO threshold, the system restarts.



**Consideration for OVP Setup:**

(1) Rst1 and Rst2 used as start-up resistors. Rst1=Rst2, so the input voltage VM is equally shared by these two resistors. At the middle point between Rst1 and Rst2, the input voltage VM is halved, and adopted for OVP threshold setup. Rst1 and Rst2 resistance is between 150k ohm ~ 400k ohms. If it needs to support lower input voltage, these two resistors should be smaller. On the contrary, these two resistors can be larger to improve efficiency.

(2) Affected by the accuracy of resistor string Rst1,Rst2 and R1, R2, further affected by the accuracy of the chip internal reference voltage, the OVP threshold calculated by Equation (6) may not exactly matches the real value. The accurate OVP threshold can be achieved by adjusting the resistor R2. If the real OVP threshold is lower than expected, then the resistance of R2 should be decreased. On the contrary, the resistance of R2 should be increased. R2 initial value can be 4.7k ohms, then the resistance of R1 can be determined by Equation (6). Finally, fine tuning R2 to get accurate OVP threshold.

(3) Highly recommended to set the Over voltage protection threshold at least 1.7 times of the maximum LED voltage. For example, the maximum LED voltage is 85V, the OVP threshold is better configured as  $1.7 \times 85 = 144V$ . If the 1.7 times maximum LED voltage still lower than 55V, then the OVP threshold should be set at 55V or higher.

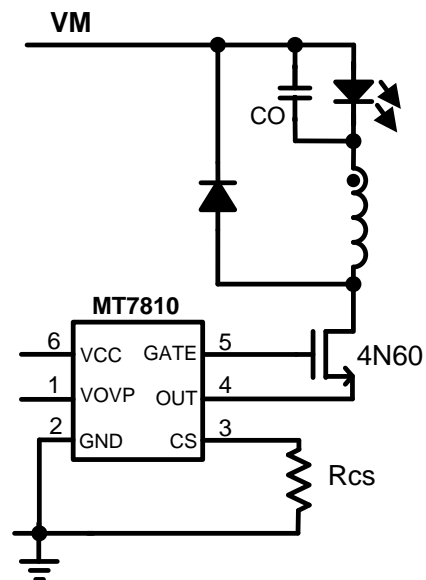
It's not recommended to set the OVP threshold too close to the normal operating LED voltage. It may false trigger the OVP protection during normal operation, flickering occurs in result.

(4) Once the inductance L is determined, Over voltage protection threshold (OVP) can't be set too high neither. If substitutes the OVP threshold into the Equation (4), the calculated off-time  $T_{OFF}$

is less than the  $T_{OFF\_MIN}(1.5\mu s)$ , System will not work in critical conduction mode any more, but in discontinues conduction mode under open-circuit condition. In this case, the real OVP threshold will be much higher than the calculated threshold by Equation (6). In this case, it is recommended that the customers either lowering the Over voltage protection threshold or redesign the inductance to ensure that the OFF time ( $T_{OFF}$ ) is greater than the  $T_{OFF\_MIN}$  ( $1.5\mu s$ ) under open-circuit condition.

**Driving external power MOS**

MT7810 has an external power MOS drive pin, GATE (Pin5). There are a resistor and a diode in parallel between the GATE pin and VCC pin (Pin6) to adjust the external MOSFET rising and falling edge to reduce the EMI. Refer to page 4 **Internal Block Diagram**. To drive a 4A and below power MOSFET (such as 4N60, 2N60, 1N60), GATE pin can directly connect to the MOSFET gate terminal. Shown in below:



*Directly drive by GATE Pin*

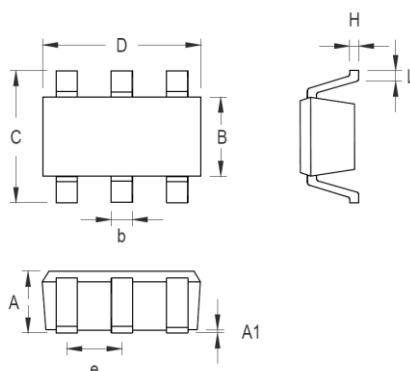
If the output LED current is bigger, output power is larger, a more powerful MOSFET is needed, such as 6N60. Limited by MT7810 internal drive circuit capability, it is not recommended to drive the external power MOSFET by GATE pin. But drive by VCC pin with external resistor and diode.





## PACKAGE INFORMATION

### SOT-23-6



Symbol	Dimensions In Millimeters		Dimensions In Inches	
	Min	Max	Min	Max
A	0.889	1.295	0.035	0.051
A1	0.000	0.152	0.000	0.006
B	1.397	1.803	0.055	0.071
b	0.250	0.559	0.010	0.022
C	2.591	2.997	0.102	0.118
D	2.692	3.099	0.106	0.122
e	0.838	1.041	0.033	0.041
H	0.080	0.254	0.003	0.010
L	0.300	0.610	0.012	0.024

### Important Notice

- Maxic Technology Corporation (Maxic) reserve the right to make correction, modifications, enhancements, improvements and other changes to its products and services at any time and to discontinue any product or service with notice. Customers should obtain the latest relevant information before placing orders and should verify that such information is current and complete. All products are sold subject to Maxic's terms and conditions of sale supplied at the time of order acknowledgement.
- Reproduction, copying, transferring, reprinting this paper without Maxic's written permission is prohibited.
- Maxic is not responsible or liable for customer product design by using Maxic components. To minimize the risks and associated with customer products and applications, customers should provide adequate design and operating safeguards and consult Maxic's sales department.





**For detail products information and sample requests, please contact:**

**Maxic Technology Corporation (Beijing Office)**

1006, Crown Plaza Office Tower, No106, ZhiChun Road, Hai Dian District, Beijing, China, 100086

Tel: 86-10-62662828

Fax: 86-10-62662951

**Maxic Technology Corporation (Shenzhen office)**

Room 1115, Qinghai Building, No.7043 North Ring Road, Futian District, Shenzhen, P.C. 518000

Tel: 86-755-83021778

Fax: 86-755-83021336

**Maxic Technology Corporation (Suzhou Office)**

B-503, #3 Chuangye Park, 328 Xinghu Street, Industrial Park, Suzhou, 215021

Tel: 86-512-62958262

Fax: 86-512-62958262

Web: [www.maxictech.com](http://www.maxictech.com)

E-mail: [sales@maxictech.com](mailto:sales@maxictech.com)